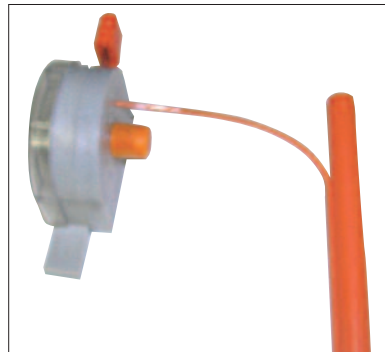
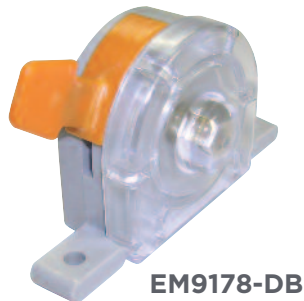


# LOCATING

## MICRODUCT LOCATE WIRE BONDING & GROUNDING CONNECTOR

For use in handholes, vaults, pedestals, cabinets, enclosures. IDC connector is gel-filled and made from corrosion-resistant hardware and engineering-grade thermoplastic. Small design can connect up to eight locate wires, ranging from #20-#24 AWG (.032-.020) and #6 AWG ground wire.



### FEATURES AND BENEFITS

- Provides continuity through connector for locating through handholes and vaults, or easy access for locating technician to remove and isolate individual wires
- Available with and without ground connection.
- Available for direct buried application.

### ORDERING INFORMATION

- EM9178-G** – IDC connector with eight positions and ground connection
- EM9178-DB** – IDC connector with eight positions, no ground connection. Direct buried application.
- EM9178-DBG** – IDC connector with eight positions and ground connection. Direct buried application.